

YetiCam LLC

www.YetiCam.com

Modification document for the Sony DSC-W55

Please note that making modifications to this camera will void all warranties to the camera and could damage the camera beyond repair. YetiCam LLC is not responsible for any injuries or damage created by use of this document.

1. Remove the camera batteries and memory stick.
2. Remove screws A and B from the camera noting the length of the screws.



3. Remove screw C from the camera noting length of the screw.



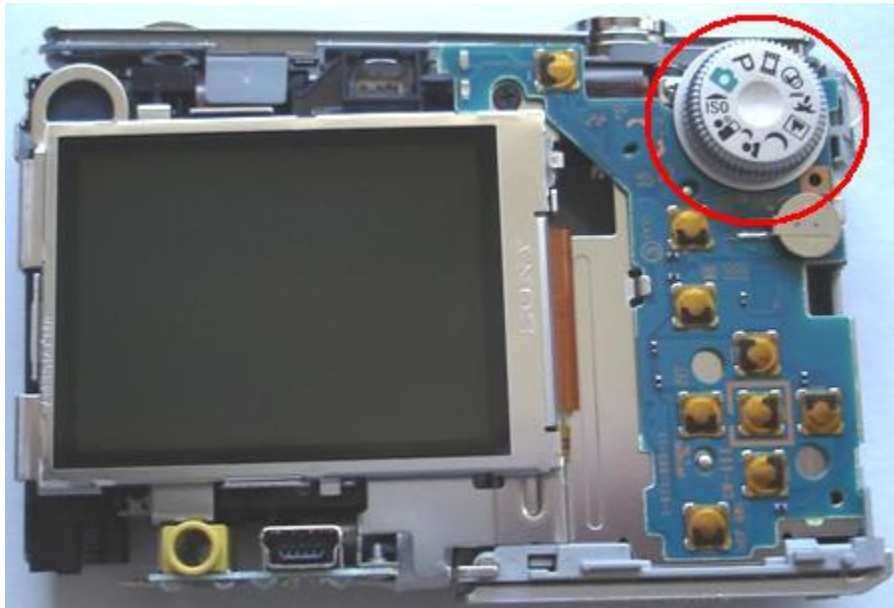
YetiCam LLC

www.YetiCam.com

4. Remove screw D and E from the camera noting length of the screws.



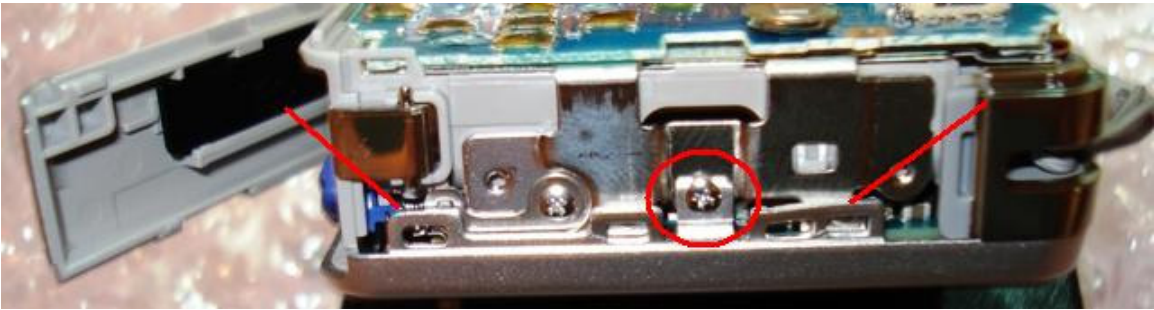
5. Carefully separate the back and front halves of the case leaving you with the circuit boards. You will now need to remove the selector knob by pulling straight up.



YetiCam LLC

www.YetiCam.com

6. Remove the screw shown to allow front cover to be separated. You will need to release the latches shown in the picture too.



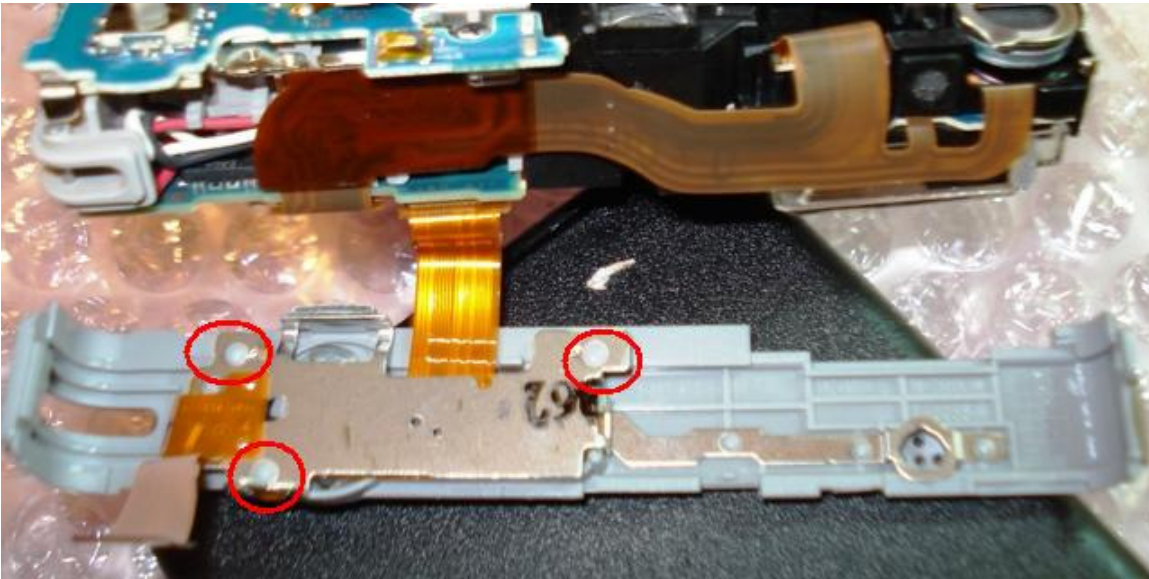
7. Remove the screw shown in the red circle and the gently pull up on the shutter button assembly while prying out on the tabs at the end of the plastic. With the shutter button assembly loose, remove the cable shown with the red line from the socket by gently pulling it up. .



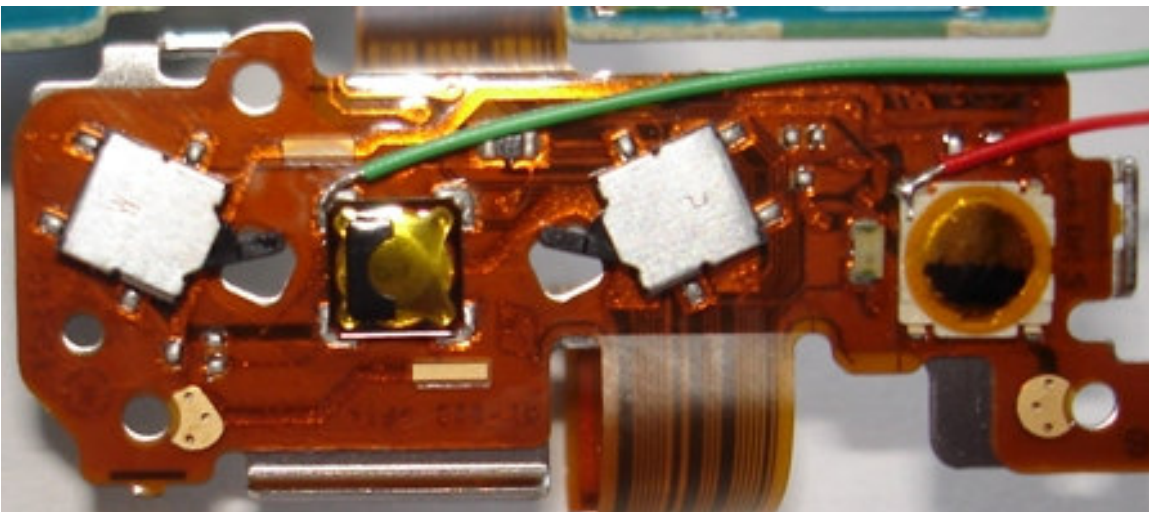
YetiCam LLC

www.YetiCam.com

8. Turn the shutter button assembly over and use an Exacto knife to cut away the plastic buttons holding the circuit board on.



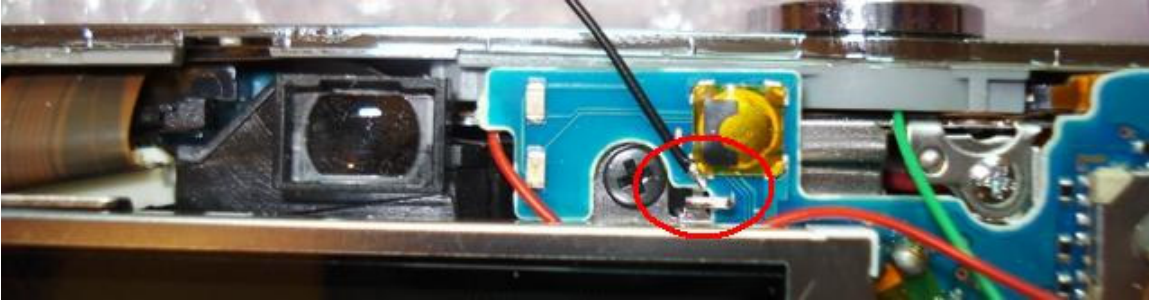
9. With the circuit board removed, you can see the connection points for the Power (Red Wire) and the Shutter (Green Wire).



10. Reassemble the shutter button assembly in the reverse order using Super Glue to glue the circuit board back onto the shutter button assembly.
11. You can connect the common to any common location but I used the one shown in the picture below.

YetiCam LLC

www.YetiCam.com



12. Now route the wires out of the camera and a convenient location for your servo connector.
13. The camera should be wired to the YetiCam board with the following connections:
 - a. Camera's Power wire should go to the Red Wire on the 4 conductor cable (the P pin).
 - b. Camera's Shutter wire should go to the Green Wire on the 4 conductor cable (the S pin).
 - c. Camera's common wire should go to either the White or Black wire on the 4 conductor cable (the SC or PC pin).
 - d. The solder jumpers on the back of the control board should have B soldered to C and E soldered to F.