

YetiCam LLC

www.YetiCam.com

Modification document for the Sony DSC-W35

Please note that making modifications to this camera will void all warranties to the camera and could damage the camera beyond repair. YetiCam LLC is not responsible for any injuries or damage created by use of this document.

1. Remove the camera batteries and memory stick.
2. Remove screws A and B from the camera noting the length of the screws.



3. Remove screw C from the camera noting length of the screw.



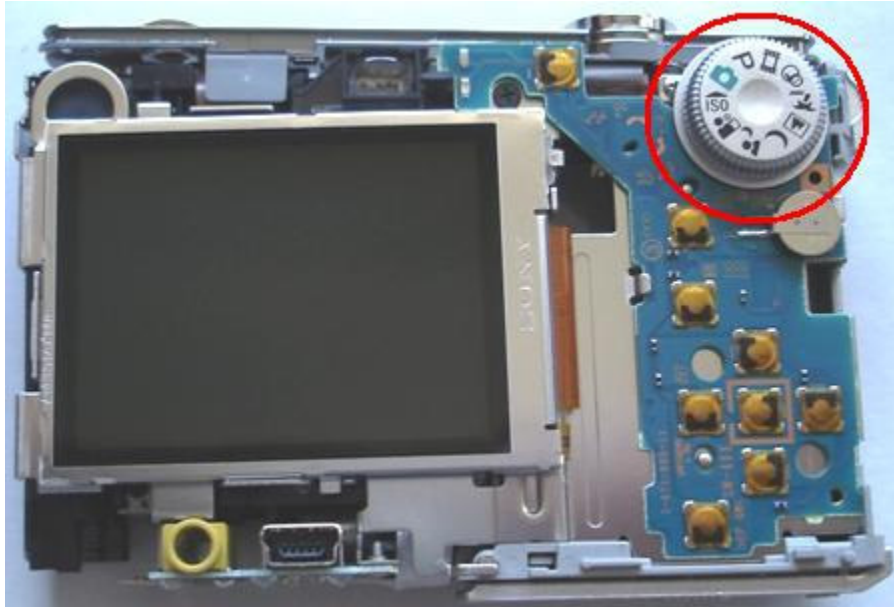
4. Remove screw D from the camera noting length of the screw.



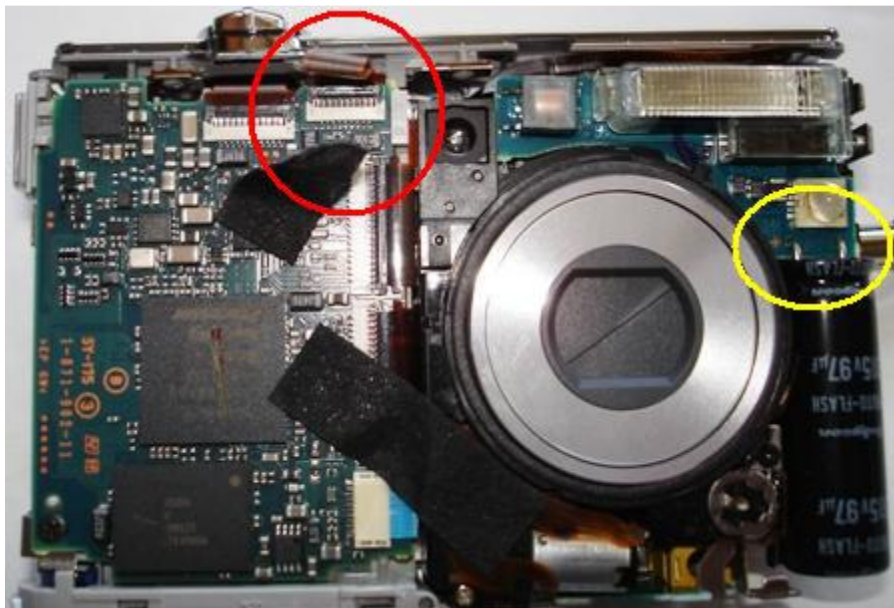
YetiCam LLC

www.YetiCam.com

5. Carefully separate the back and front halves of the case leaving you with the circuit boards. You will now need to remove the selector knob by pulling straight up.



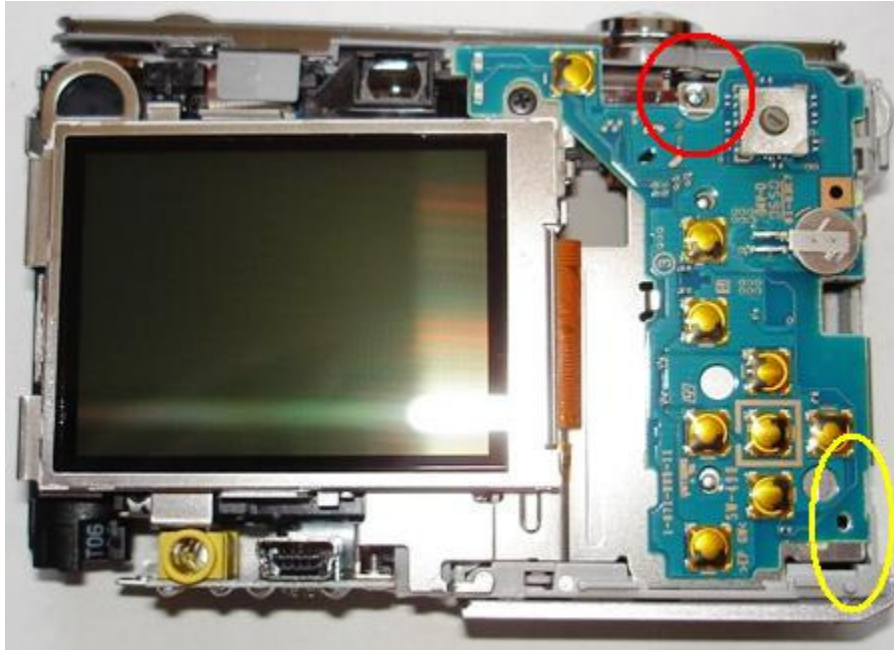
6. Turn the camera over and remove the tape shown in the red circle and then carefully pull up on the flexible cable to remove from the cable block. The area shown in yellow is the flash capacitor. This should be drained by shorting the two leads together with a power resistor.



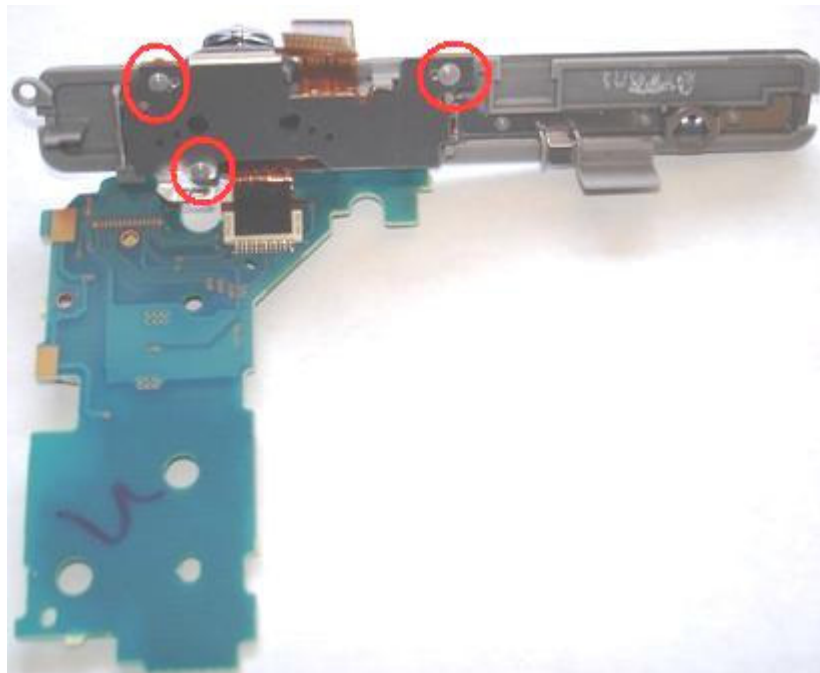
YetiCam LLC

www.YetiCam.com

7. Turn the camera back over and remove the screw shown in the red circle. With this screw out, you can lift the circuit board out and the shutter button assembly out. Pay particular attention to the area shown in yellow. There is a small tab on the circuit board that is under a slot in the camera body. You must pry this tab out to free the circuit board.



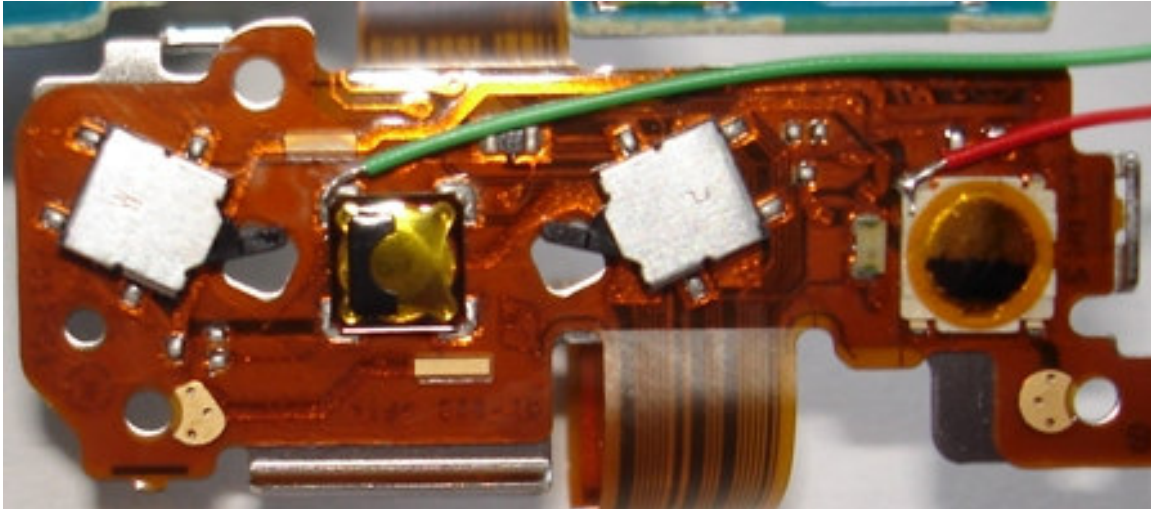
8. Turn the shutter button assembly over and use an Exacto knife to cut away the plastic buttons holding the circuit board on.



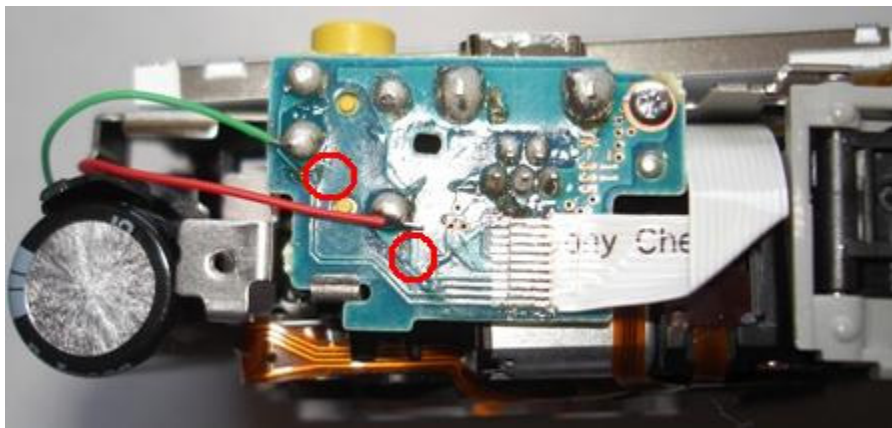
YetiCam LLC

www.YetiCam.com

9. With the circuit board removed, you can see the connection points for the Power (Red Wire) and the Shutter (Green Wire).



10. Reassemble the shutter button assembly in the reverse order using Super Glue to glue the circuit board back onto the shutter button assembly.
11. If you want to disable the AV function on the camera then you can use the 3.5 mm stereo jack to connect the power and shutter wires to. The common is already connected to the stereo jack assembly and you will not need to run a separate common. Solder the Power wire (Red wire) where shown and the Shutter wire (Green Wire) where shown. This will make the tip of the stereo jack the power connection, the second ring the shutter, and the base the common. You will also need to use an Exacto knife to cut the traces away from the board at these solder locations (trace cuts shown in red). This will disable the AV function on the camera.



12. If you don't want to use the stereo jack, you can route the wires out to a servo assembly. You will also need to solder a common wire to the USB hood.

YetiCam LLC

www.YetiCam.com

13. The camera should be wired to the YetiCam board with the following connections:
 - a. Camera's Power wire should go to the Red Wire on the 4 conductor cable (the P pin).
 - b. Camera's Shutter wire should go to the Green Wire on the 4 conductor cable (the S pin).
 - c. Camera's common wire should go to either the White or Black wire on the 4 conductor cable (the SC or PC pin).
 - d. The solder jumpers on the back of the control board should have B soldered to C and E soldered to F.