

# YetiCam LLC

[www.YetiCam.com](http://www.YetiCam.com)

## Modification document for the Sony DSC-W130

Please note that making modifications to this camera will void all warranties to the camera and could damage the camera beyond repair. YetiCam LLC is not responsible for any injuries or damage created by use of this document.

1. Remove the camera batteries and memory stick.
2. Remove screws A and B from the camera noting the length of the screws.



3. Remove screw C and D from the camera noting length of the screw.



4. Remove screw E, F, and G from the camera noting length of the screw.



# YetiCam LLC

[www.YetiCam.com](http://www.YetiCam.com)

5. Remove screw H and from the camera noting length of the screw.



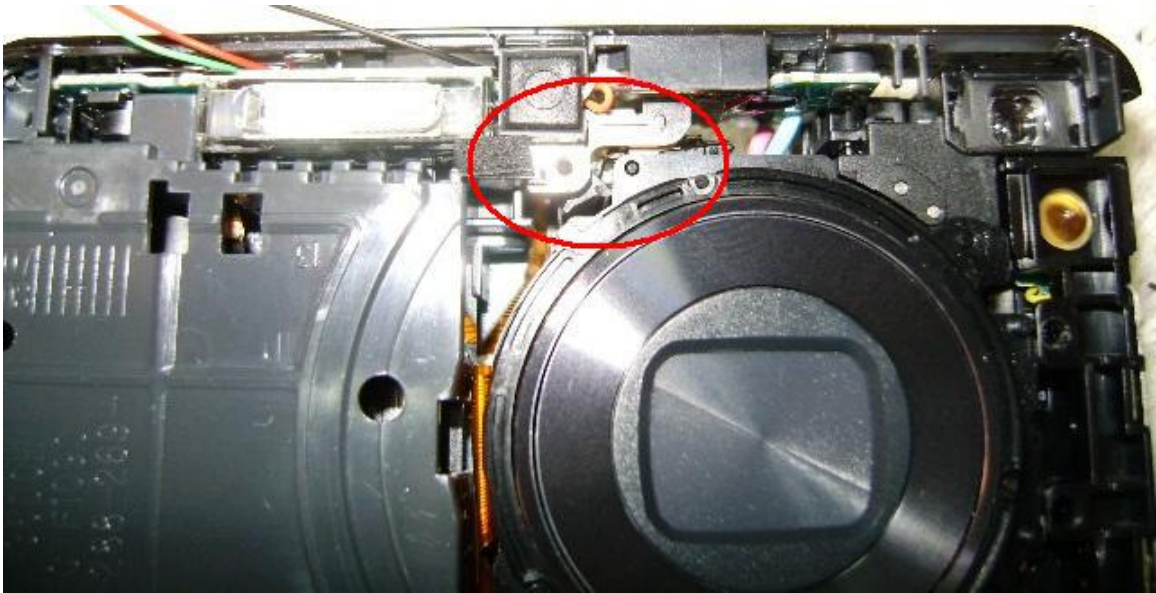
6. Carefully separate the back and front halves of the case leaving you with the circuit boards exposed. You will need to remove a screw from down deep beside the lens to remove the button cover.



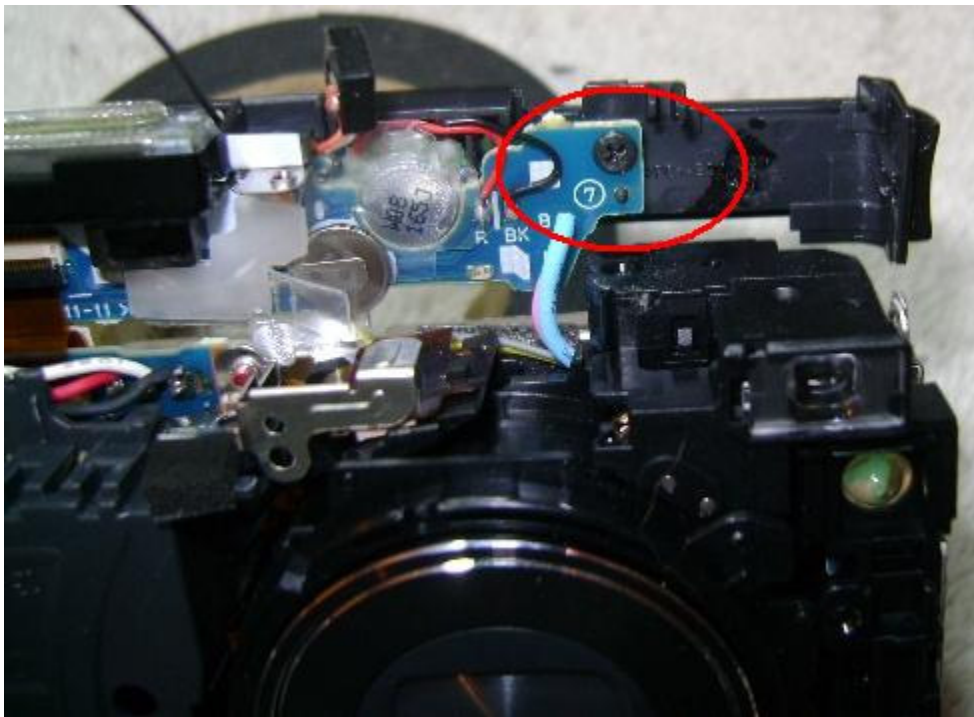
# YetiCam LLC

[www.YetiCam.com](http://www.YetiCam.com)

7. Here is a picture of the screw end from the other side of the camera. It is a little screw with a Phillips head and attaches the two metal brackets shown together.



8. You will now be able to tip the whole button assembly back towards the LCD and expose the screw shown here. Remove this screw and the circuit board will separate from the top cover and expose the buttons on the circuit board. You may need to play with the plastic catches by the wrist strap holder to free them up before rotating the top cover.



# YetiCam LLC

[www.YetiCam.com](http://www.YetiCam.com)

9. With the circuit board removed, you can see the connection points for the Power (Red Wire) and the Shutter (Green Wire). The common is the black wire in the picture but you and solder this to any of the normal common locations such as the USB hood. The two solder points by the pink wire are flash power and you will want to be extremely careful with these points as they have the potential to cause injury.



10. Reassemble the shutter button assembly in the reverse order. I don't believe the screw beside the lens assembly is essential and it can be tough to replace it. If you want to leave it out you can and the camera will still operate.
11. Route the wire out of the camera to your preferred servo mounting location and drill a hole in the camera case for routing purposes. The camera should be wired to the YetiCam board with the following connections:
  - a. Camera's Power wire should go to the Red Wire on the 4 conductor cable (the P pin).
  - b. Camera's Shutter wire should go to the Green Wire on the 4 conductor cable (the S pin).
  - c. Camera's common wire should go to either the White or Black wire on the 4 conductor cable (the SC or PC pin).
  - d. The solder jumpers on the back of the control board should have B soldered to C and E soldered to F.